



Claudin 7 (ABT443) Mouse mAb

Catalog No	YP-Ab-15093
Isotype	IgG
Reactivity	Human; Predict react with Mouse, Rat
Applications	IHC, WB
Gene Name	CLDN7 CEPTRL2 CPETRL2
Protein Name	CEPTR L2; CEPTRL 2; CEPTRL2; Claudin 1; Claudin 7; Claudin 9; Claudin-7; Claudin1; Claudin7; Claudin9; CLD7_HUMAN; CLDN 7; CLDN-7; CLDN7; Clostridium perfringens enterotoxin receptor like 2; CPETR L2; CPETRL 2; CPETRL
Immunogen	Synthesized peptide derived from human Claudin 7
Specificity	The antibody can specifically recognize human Claudin 7 protein. In western blotting of LnCap cell lysate, the antibody can label a 22 kDa band corresponding to Claudin 7.
Formulation	PBS, pH7.2, 0.03% Porcolin 300, containing stabilizing protein
Source	Monoclonal Mouse IgG2b, Kappa
Purification	The antibody was affinity-purified from mouse ascites by affinity-chromatography using specific immunogen.
Dilution	IHC-p 1:200-400, WB: 500-1000
Concentration	1 mg/ml
Purity	≥90%
Storage Stability	-20°C/1 year
Synonyms	CEPTR L2; CEPTRL 2; CEPTRL2; Claudin 1; Claudin 7; Claudin 9; Claudin-7; Claudin1; Claudin7; Claudin9; CLD7_HUMAN; CLDN 7; CLDN-7; CLDN7; Clostridium perfringens enterotoxin receptor like 2; CPETR L2; CPETRL 2; CPETRL2; Hs.84359
Observed Band	
Cell Pathway	Membranous
Tissue Specificity	kindey
Function	function: Plays a major role in tight junction-specific obliteration of the intercellular space., induction: By androgens., similarity: Belongs to the claudin family., subunit: Directly interacts with TJP1/ZO-1, TJP2/ZO-2 and TJP3/ZO-3., tissue specificity: Expressed in kidney, lung and prostate. Isoform 1 seems to be predominant, except in some normal prostate samples, where isoform 2 is the major form. Down-regulated in breast cancers, including ductal carcinoma in situ (DCIS), lobular carcinoma in situ (LCIS) and invasive ductal carcinoma (IDC) (at protein level), as well as in several cancer cell lines. Loss of expression correlates with histological grade, occurring predominantly in



high-grade lesions.,

Background

This gene encodes a member of the claudin family. Claudins are integral membrane proteins and components of tight junction strands. Tight junction strands serve as a physical barrier to prevent solutes and water from passing freely through the paracellular space between epithelial or endothelial cell sheets, and also play critical roles in maintaining cell polarity and signal transductions. Differential expression of this gene has been observed in different types of malignancies, including breast cancer, ovarian cancer, hepatocellular carcinomas, urinary tumors, prostate cancer, lung cancer, head and neck cancers, thyroid carcinomas, etc.. Alternatively spliced transcript variants encoding different isoforms have been found.[provided by RefSeq, May 2010],

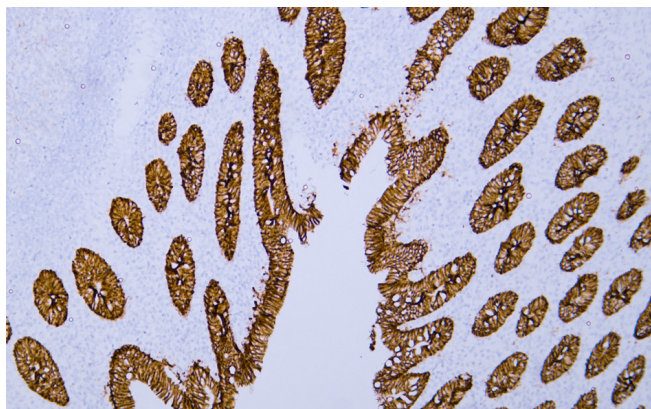
matters needing attention

Avoid repeated freezing and thawing!

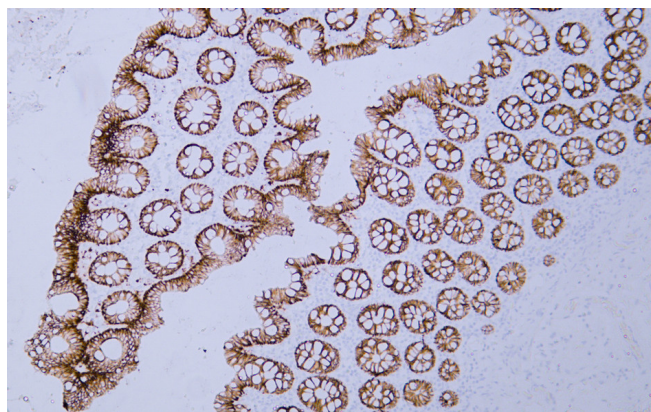
Usage suggestions

This product can be used in immunological reaction related experiments. For more information, please consult technical personnel.

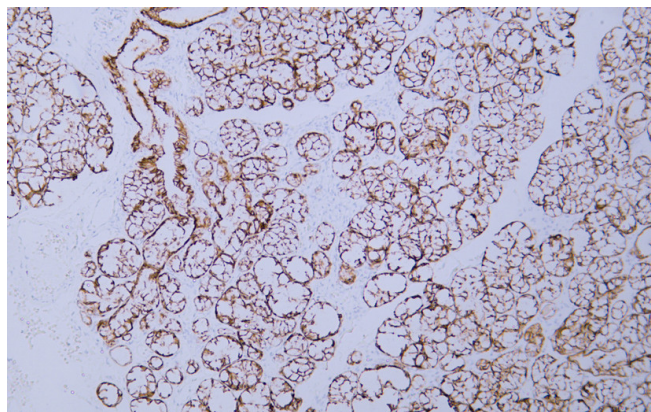
Products Images



Human appendix tissue was stained with Anti-Claudin 7 (ABT443) Antibody



Human colon tissue was stained with Anti-Claudin 7 (ABT443) Antibody



Human salivary gland tissue was stained with Anti-Claudin 7 (ABT443) Antibody